

RESEARCH

Open Access



Physiological mechanism of improved tolerance of *Saccharomyces cerevisiae* to lignin-derived phenolic acids in lignocellulosic ethanol fermentation by short-term adaptation

Hanqi Gu^{1,2*} , Yuyong Zhu¹, Yanfang Peng¹, Xiujuan Liang³, Xiaoguang Liu¹, Lingzhi Shao¹, Yanyan Xu¹, Zhaohu Xu¹, Ran Liu¹ and Jie Li^{1*}

Abstract

Background: Phenolic acids are lignin-derived fermentation inhibitors formed during many pretreatment processes of lignocellulosic biomass. In this study, vanillic, *p*-hydroxybenzoic, and syringic acids were selected as the model compounds of phenolic acids, and the effect of short-term adaptation strategies on the tolerance of *S. cerevisiae* to phenolic acids was investigated. The mechanism of phenolic acids tolerance in the adapted yeast strains was studied at the morphological and physiological levels.

Results: The multiple phenolic acids exerted the synergistic inhibitory effect on the yeast cell growth. In particular, a significant interaction between vanillic and hydroxybenzoic acids was found. The optimal short-term adaptation strategies could efficiently improve the growth and fermentation performance of the yeast strain not only in the synthetic media with phenolic acids, but also in the simultaneous saccharification and ethanol fermentation of corncob residue. Morphological analysis showed that phenolic acids caused the parental strain to generate many cytoplasmic membrane invaginations with crack at the top of these sites and some mitochondria gathered around. The adapted strain presented the thicker cell wall and membrane and smaller cell size than those of the parental strain. In particular, the cytoplasmic membrane generated many little protrusions with regular shape. The cytoplasmic membrane integrity was analyzed by testing the relative electrical conductivity, leakage of intracellular substance, and permeation of fluorescent probe. The results indicated that the short-term adaptation improved the membrane integrity of yeast cell.

Conclusion: The inhibition mechanism of phenolic acid might be attributed to the combined effect of the cytoplasmic membrane damage and the intracellular acidification. The short-term adaptation strategy with varied stressors levels and adaptive processes accelerated the stress response of yeast cell structure to tolerate phenolic acids. This strategy will contribute to the development of robust microbes for biofuel production from lignocellulosic biomass.

Keywords: *Saccharomyces cerevisiae*, Tolerance to phenolic acids, Lignocellulosic ethanol, Short-term adaptation, Cytoplasmic membrane integrity, Cytoplasmic membrane invagination

*Correspondence: gu_hanqi@126.com; lijie0651@163.com

¹ Department of Biology and Food Science, Hebei Normal University for Nationalities, Chengde 067000, Hebei, China

Full list of author information is available at the end of the article



Background

The effect of lignocellulose-derived inhibitors on the fermenting microorganisms has become a challenge to the industrial development of biofuel production. Phenolic acids are the inhibitors with more kinds of compounds, higher concentration, and higher chemical stability than the phenolic aldehydes and alcohols in various lignocellulosic hydrolysate from common pretreatment methods (the dilute acid, steam explosion, alkali and alkaline wet oxidation) [1–4]. They are classified into groups of guaiacyl, *p*-hydroxyphenyl, syringyl, and other aromatic acids based on the structure of lignin monomers [5, 6] (Fig. 1). It has been found that phenolic acids were the main inhibitors that affected *S. cerevisiae* seriously during the simultaneous saccharification and ethanol fermentation of corn cob residue (SSF) [7, 8].

The inhibition mechanism of the phenolic acids remains not fully understood due to their complicated chemical structures [9, 10], although it was hypothesized that phenolic acids may damage the electrochemical gradient of the mitochondrial membranes [11, 12]. Many studies were conducted to compare the inhibitory effect of different phenolic acids [9, 13–15], but only a few of them studied the mechanism. Campos and colleagues reported the effects of phenolic acids on cell membrane permeability of lactic acid bacteria in wine [16]. Our previous study observed that ferulic acid could cause disintegration of cytoplasmic membrane of *S. cerevisiae* [8].

Hence, further research on the mechanism of phenolic acids inhibition is needed for identifying their specific cellular target and further providing efficient solutions.

Short-term adaptation of yeast is an efficient strategy for improving strain tolerance towards lignocellulosic inhibitor by pre-exposed strain to the inhibitors present in the subsequent fermentation medium. This process incorporated to the seed cultivation process at low pH can efficiently simplify operation steps, decrease detoxification cost, and prevent bacterial contamination [17, 18]. In addition, it has been found that the concentration of lignocellulosic hydrolysate during adaptation process directly affects subsequent fermentation performance and cell biomass [19]. The adaptation strategies through pulse exposure to stress have been applied for improving the tolerance of *S. cerevisiae* to inhibitors and osmotic pressure [20, 21]. The short-term adaptation has been applied for improving the tolerance of *S. cerevisiae* to phenolic acids during the SSF of corn cob residue [7]. However, the effect of adaptation strategies on triggering and generating the tolerant phenotype to phenolic acids remains unclear. Moreover, the short-term adaptation to furfural could induce *Bacillus coagulans* to generate significant cell elongation, which related to the cell integrity and might be the reason for the tolerance to furfural [22].

In this study, the short-term adaptation strategies were used for improving the tolerance of *S. cerevisiae* to phenolic acids in the fermentation of lignocellulosic biomass,

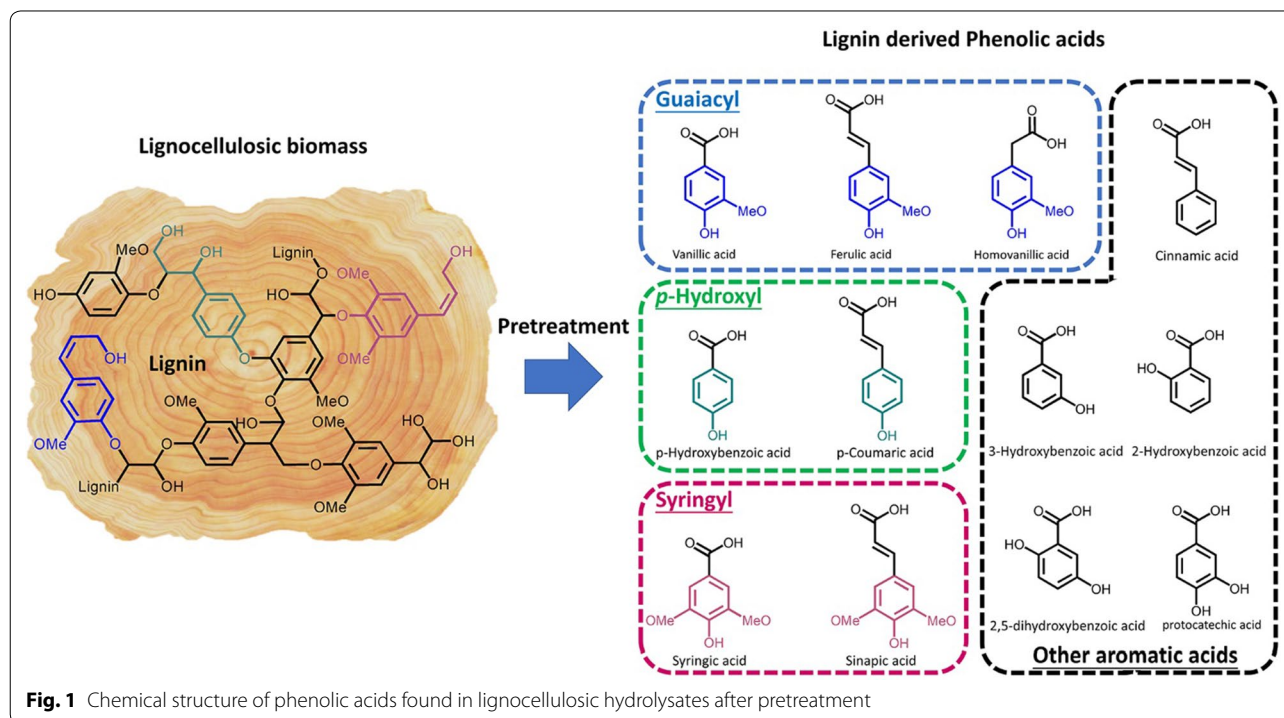


Fig. 1 Chemical structure of phenolic acids found in lignocellulosic hydrolysates after pretreatment

and the tolerance mechanism was revealed from the morphological and physiological traits of yeast cell. Specifically, the inhibitory effect of individual and multiple phenolic acids on the physiological properties of *S. cerevisiae* was investigated. The effect of adaptation strategies on the growth and fermentation performance of yeast strain was studied in the synthetic media with phenolic acids and in the SSF of corncob residue, respectively. The yeast cell structure was analyzed using scanning and transmission electron microscopy and flow cytometry. This study provided an efficient adaptation strategy for improving tolerance of yeast to phenolic acids and explained the reason at the cellular level.

Results and discussion

Inhibitory effect of individual phenolic acids on *S. cerevisiae*

Vanillic acid, *p*-hydroxybenzoic acid and syringic acid were selected as the model compounds of phenolic acids from the groups of guaiacyl, *p*-hydroxyphenyl and syringyl, respectively (Fig. 1) [23]. The growth and

fermentation kinetic parameters of *S. cerevisiae* were investigated under the stress of individual phenolic acid (Table 1). With increasing concentration of phenolic acid, the cell growth presented the decrease in specific growth rate and biomass, and the increase in lag phase and growth inhibition. The minimum inhibitory concentrations (MIC) of vanillic and *p*-hydroxybenzoic acid were approximately 3.0 g/L and 5.0 g/L (equal to 17.8 mM and 36.2 mM). The growth inhibition caused by syringic acid at concentration more than 2.0 g/L could not be investigated due to its low solubility in water [7]. However, the MIC of syringic acid could be calculated as 3.8 g/L according to the previously reported method that extrapolation from the curve of specific growth rate against inhibitor concentration (Additional file 1: Figure S1) [14]. In addition, the fermentation performance indicated the obvious decrease in glucose uptake rate and ethanol productivity, while only slight inhibition on ethanol yield (Table 1).

The result shows that the individual phenolic acid had an inhibitory effect on the growth and fermentation rate,

Table 1 Effect of phenolic acids on the growth and fermentation performance of *S. cerevisiae*

Phenolic acids	Concentration (g/L)	μ_{\max}^b (h ⁻¹)	GI ^b (%)	Lag phase (h)	$Y_{x/s}^b$ (g/g)	Q_{glucose} (g/L/h)	Q_{EtOH} (g/L/h)	Y_{EtOH} (%)
Vanillic acid	0	0.38	0	3	0.24	3.03	1.37	84.34
	0.33	0.35	7.78	3	0.21	3.07	1.25	81.17
	0.75	0.36	6.64	3	0.19	2.68	1.13	80.80
	1.5	0.33	13.99	3	0.16	2.47	0.88	84.65
	2.25	0.18	53.60	9	0.11	1.15	0.51	80.55
	3.0	0.00	99.55	15	0.03	0.78	0.24	61.14
<i>p</i> -hydroxybenzoic acid	0	0.37	0	3	0.25	3.00	1.27	82.79
	2.0	0.36	5.48	3	0.20	3.07	1.23	78.01
	2.5	0.33	12.20	3	0.18	3.00	1.25	80.36
	3.0	0.30	21.63	3	0.17	2.02	0.82	79.29
	4.0	0.20	45.88	9	0.14	1.17	0.50	82.62
	5.0	0	100	15	0.02	0.75	0.19	49.02
Syringic acid	0	0.38	0	3	0.26	2.87	1.26	85.96
	0.25	0.36	6.01	3	0.26	2.80	1.23	86.25
	0.5	0.36	5.05	3	0.23	2.62	1.17	84.62
	1.0	0.34	11.19	3	0.22	2.45	0.82	86.48
	1.5	0.30	20.98	3	0.20	2.40	0.61	83.11
	2.0	0.27	29.03	3	0.18	2.23	0.63	87.77
	2.5	0.27	29.03	3	0.18	2.23	0.63	87.77
V-H-S ^a	0	0.37	0	3	0.26	2.82	1.27	86.06
	0.5-0.3-0.25	0.33	9.83	3	0.25	2.82	1.09	75.76
	1.0-0.6-0.5	0.23	38.77	3	0.20	1.92	1.05	71.06
	1.5-0.9-0.75	0.16	57.39	9	0.08	0.72	0.22	59.62
	2.0-1.2-1.0	0	100	15	0.03	0.10	0.08	21.36
	2.5-1.5-1.25	0	100	24	0.02	0	0	0

^a V-H-S represented the cocktail of vanillic acid, *p*-hydroxybenzoic acid and syringic acid

^b μ_{\max} and $Y_{x/s}$ represented the maximum specific growth rate and biomass yield during initial 15 h, respectively; GI is the growth inhibition rate

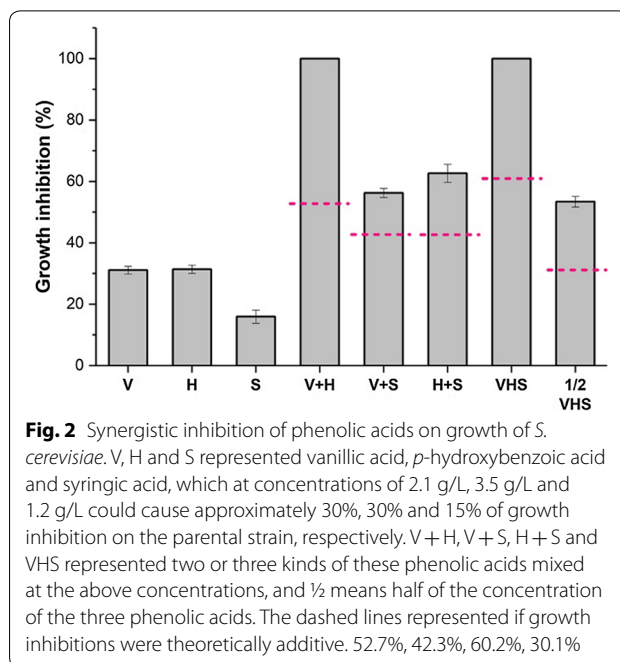
^c Y_{EtOH} was the ratio of maximum ethanol concentration to the theoretical ethanol from the total glucose in the medium within 24 h of culture period

but did not completely inhibit the final ethanol yield, which is consistent with previous studies about the inhibition of these phenolic acids on the yeast strains [2, 8, 15]. This is probably because the phenolic acid mainly caused the inhibition on the growth of yeast cells rather than directly inhibiting the central pathways for ethanol fermentation. A low level of the individual phenolic acid (vanillic acid, syringic acid and *p*-hydroxybenzoic acid were lower than 1.5, 2.0 and 3.0 g/L) did not affect the metabolism of glucose converted to ethanol (ethanol yield) in cell, but the rate of glucose uptake and ethanol productivity was limited by the cell growth rate, while high concentration of phenolic acid inhibited cell growth and ethanol fermentation simultaneously, leading to a decrease in ethanol yield. Moreover, the inhibition intensity order was vanillic acid > syringic acid > *p*-hydroxybenzoic acid. Although a similar result that phenolic acids inhibited the fermentation performance of *S. cerevisiae* was found, it did not study the inhibitory effect on the cell growth [24].

Synergistic inhibition of multiple phenolic acids on *S. cerevisiae*

The effect of multiple phenolic acids on the growth and fermentation performance of yeast strain was investigated for analyzing their synergistic inhibition (Table 1). With increasing concentration of mixed phenolic acids, the maximum specific growth rate and biomass yield reduced from 0.37 h⁻¹ and 0.26 g dry cell weight/g glucose to 0, respectively, and the lag phase was prolonged from 3 to 24 h. For the fermentation, the glucose uptake rate and ethanol productivity sharply decreased. In particular, the ethanol yield decreased from 86.06% to 0 with increasing concentration of mixed phenolic acids.

The synergistic inhibition of phenolic acids on the growth of *S. cerevisiae* was further investigated (Fig. 2). The individual vanillic, *p*-hydroxybenzoic and syringic acids at 2.1 g/L, 3.5 g/L and 1.2 g/L caused the growth inhibition rate of 31.1%, 31.4% and 15.9%, respectively. The dashed lines represented the theoretically additive inhibition caused by the mixed phenolic acids. For instance, the growth inhibition rate caused by the mixture of vanillic acid and *p*-hydroxybenzoic acid (V + H) should be $(1 - 68.9\% \times 68.6\%) = 52.7\%$, in which 68.9% and 68.6% were the growth rate of yeast cells under the stress of vanillic acid and hydroxybenzoic acid, respectively. However, the actual growth inhibition rate caused by V + H was 100%. The similar results show that the growth inhibition rates caused by the mixture of V + S, H + S, VHS and 1/2VHS were 56.3%, 62.7%, 100% and 53.4%, respectively. There was an obvious difference between the value of the actual growth inhibition and the theoretically additive inhibition (dashed lines in Fig. 3). These results show



the multiple phenolic acids had synergistic inhibition on the cells growth and the ethanol fermentation, especially on the ethanol yield. These aligned with previous studies about the synergistic effect of phenolic acids on *Pichia stipites* and lactic acid bacteria [15, 25]. Moreover, the ANOVA result shows an interaction between vanillic and *p*-hydroxybenzoic acid is significant, which indicates that the inhibition of each other will be increased when they content in lignocellulosic hydrolysate simultaneously.

Effect of short-term adaptation strategy on the tolerance to phenolic acids

The effect of short-term adaptation strategies, such as the stepwise adaptation to the increasing concentration (Method A–G), direct adaptation to constant concentration (Method H–J) and pulse adaptation to high concentration (Method K), on the tolerance of yeast strain to phenolic acids was investigated (Fig. 3). The specific growth rates of the adapted strains from methods E, I and K were 0.32, 0.34 and 0.26 h⁻¹, respectively, which were 2–3 times higher than that of the parental strain under phenolic acid stress (Fig. 4a). The specific glucose uptake rate and ethanol productivity of the adapted strains from methods E, I and K were no obvious differences, which were about 2.33 and 1.92 times higher than those of the parental strain under the same condition, respectively (Fig. 4b). In addition, the ethanol yield and biomass yield of the adapted strains on average about 83.7% and 0.076 g dry cell weight/g glucose were slightly higher than those of the parental strain (Fig. 4c). This is probably because the parental strain could get the maximum yield of

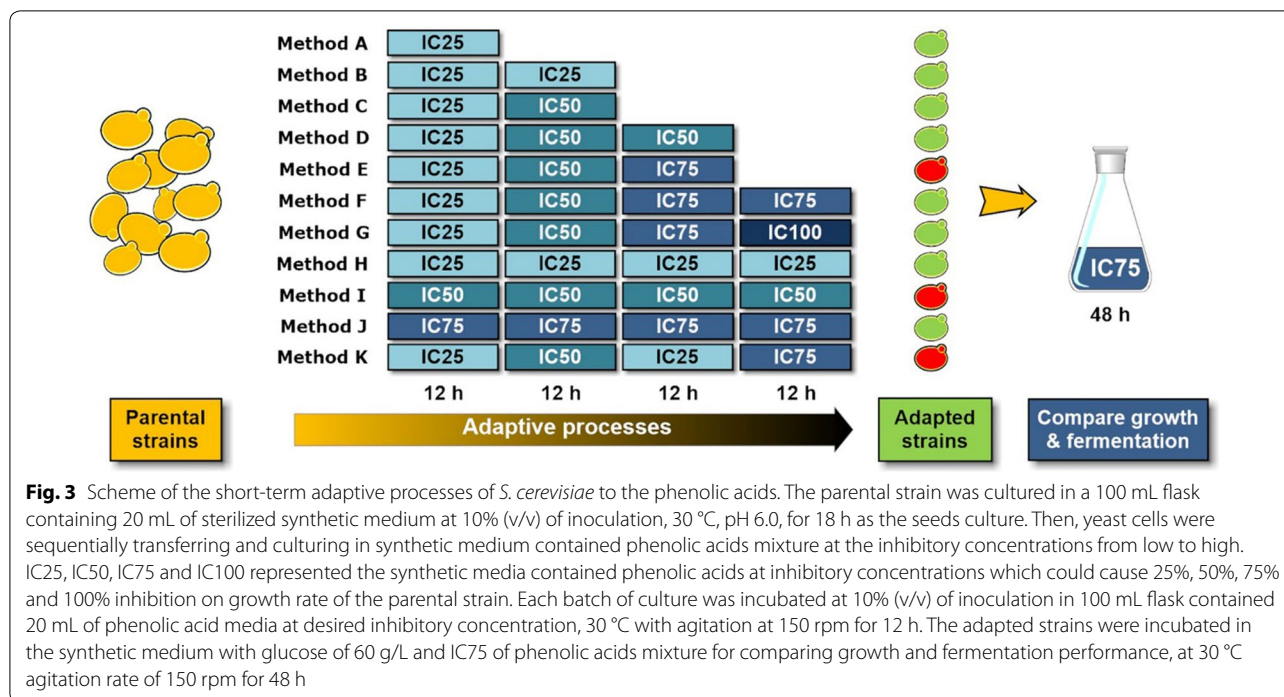


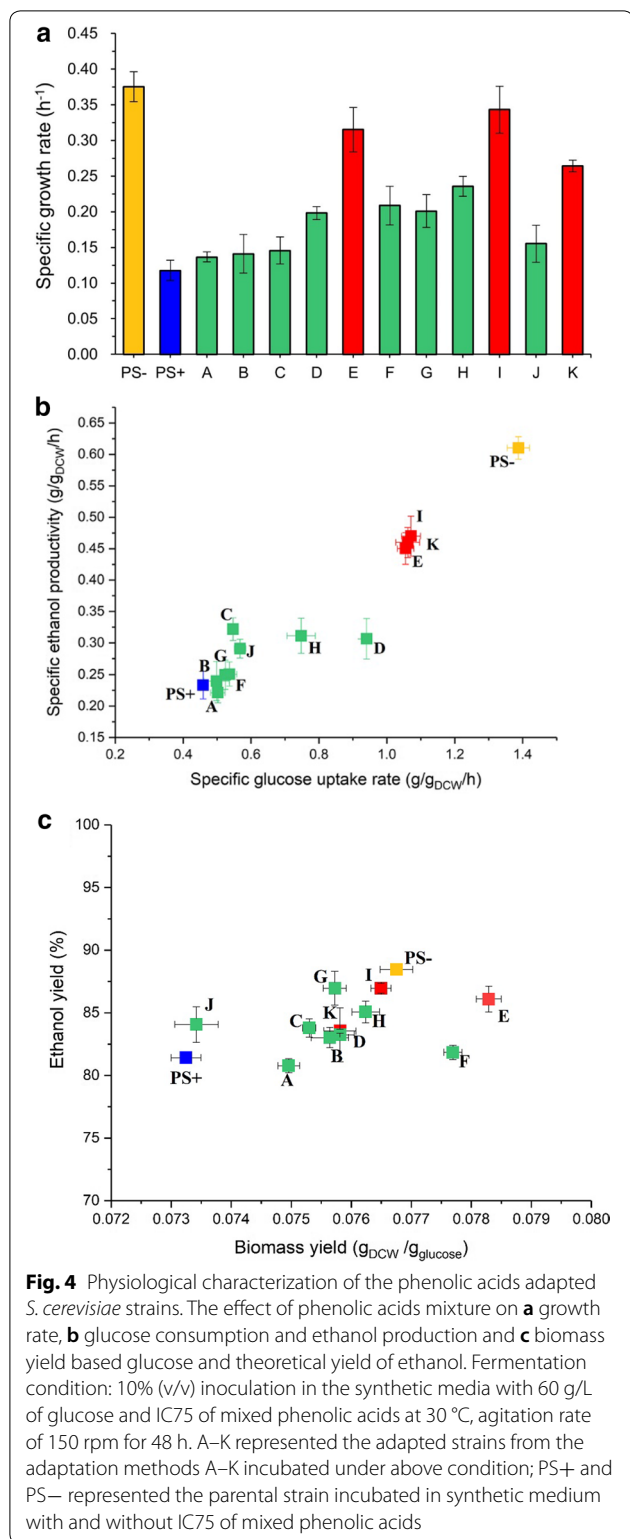
Fig. 3 Scheme of the short-term adaptive processes of *S. cerevisiae* to the phenolic acids. The parental strain was cultured in a 100 mL flask containing 20 mL of sterilized synthetic medium at 10% (v/v) of inoculation, 30 °C, pH 6.0, for 18 h as the seeds culture. Then, yeast cells were sequentially transferring and culturing in synthetic medium contained phenolic acids mixture at the inhibitory concentrations from low to high. IC25, IC50, IC75 and IC100 represented the synthetic media contained phenolic acids at inhibitory concentrations which could cause 25%, 50%, 75% and 100% inhibition on growth rate of the parental strain. Each batch of culture was incubated at 10% (v/v) of inoculation in 100 mL flask contained 20 mL of phenolic acid media at desired inhibitory concentration, 30 °C with agitation at 150 rpm for 12 h. The adapted strains were incubated in the synthetic medium with glucose of 60 g/L and IC75 of phenolic acids mixture for comparing growth and fermentation performance, at 30 °C agitation rate of 150 rpm for 48 h

ethanol and biomass after the long lag phase during the 48 h' fermentation.

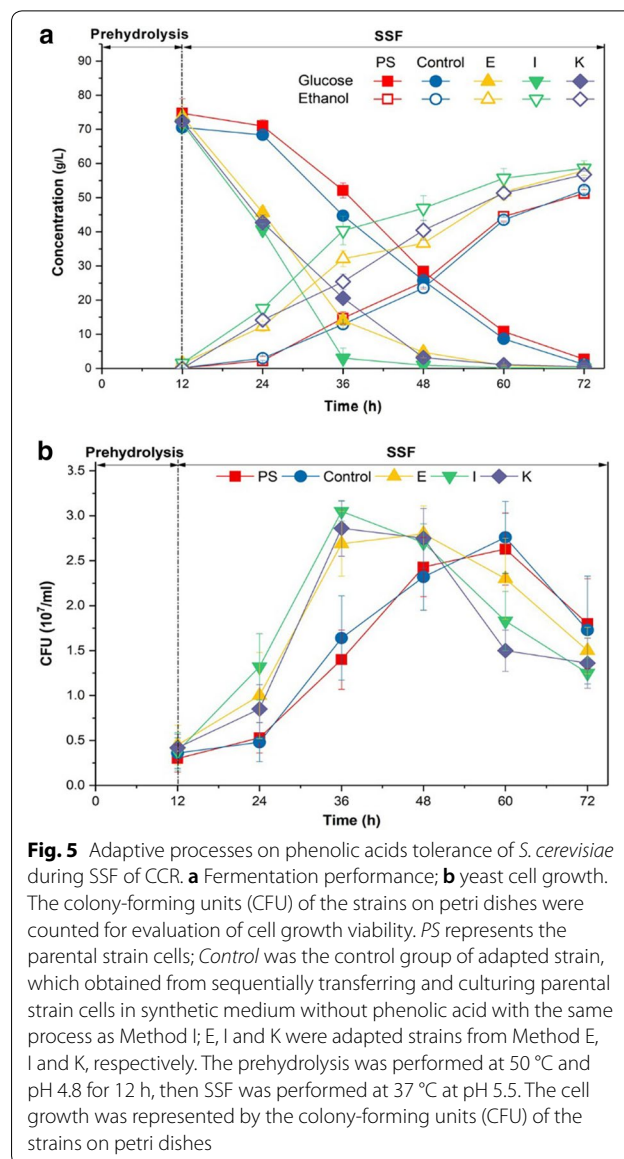
The corncob residue as a real lignocellulosic biomass contained a considerable amount of phenolic acids(16.8 mg/g dry mater), mainly including *p*-hydroxybenzoic acid, *p*-coumaric acid, ferulic acid, guaicol and 2-furoic acid [7]. The adapted strains from methods E, I and K were selected to carry out the SSF of corncob residue for further analyzing their tolerance to the complex phenolic acids. The ethanol productivity of adapted strains from methods E, I and K were 1.10, 1.63 and 1.35 g/L/h during the initial 12 h, which were much higher than that of the parental strain and control group (continuously transferring and culturing yeast parental strain cells in synthetic medium with the same process as Method I) (Fig. 5a). In addition, the cell growth of the adapted strains from methods E, I and K reached the highest colony-forming units (CFU) of 2.69, 3.05 and 2.86×10^7 in the initial 24 h of fermentation, while the parental strain and control group obtained the highest CFU of 2.63 and 2.75×10^7 for 48 h. Then, the cell viability of the parental and adapted strains began to decrease (Fig. 5b), which might be caused by the synergistic inhibition of ethanol and phenolic acids. Moreover the ethanol produced by yeast strain might lead to more phenolic acids released from the lignocellulosic feedstock during the SSF progresses [26].

The results indicate that the relationship between ethanol production and cell growth rate is closer than

to cell mass under the phenolic acid stress. The cell growth rate could be applied as one of the most important kinetic parameters for determining the tolerance of yeast strain to phenolic acids. methods E, I and K represented the three types of short-term adaptation strategies could effectively improve the tolerance of *S. cerevisiae* to phenolic acids. This is similar to the previous studies that the stepwise and pulse adaptation strategies improved the tolerance of *S. cerevisiae* to inhibitors and high-osmolarity [20, 21]. The stress response of microbials probably depends on the activation of defense and repair mechanisms for a specific stress [27, 28]. The adaptation methods E, I and K under the phenolic acids' stress at range from IC50 to IC75 might trigger the response of tolerant phenotype, while above this concentration probably caused the irreparable cell damage. Therefore, the adaptive process and stressor level might play the key role on the short-term adaptation for improving tolerance to the inhibitors. In addition, the growth and fermentation performance of the adapted strains in the SSF process indicated that the short-term adaptation could accelerate stress response of yeast cells to the phenolic acids during the initial fermentation. However, the tolerant phenotype of the adapted strains could not be stably transferred to the offspring after removing the phenolic acids stress (data not shown). This phenomenon may be explained by the mechanism of epigenetic transcriptional memory, which can be



transferred to 6–7 generations through cell division [29, 30]. The yeast cells that have been exposed to periodic changes of phenolic acids probably acquired



the “memory” of previous experiences. When exposed the adapted strain to the same stress of phenolic acids, the related gene expression and physiological changes will be triggered to fast stress response. The specific mechanism of transcription and expression will be further studied. Moreover, the result of short-term adaptation performed in the shake flask under uncontrolled conditions of aeration and pH provides only an indication about the possible behaviors of yeast strain in a controlled fermentor. The previous studies reported some other strains presented different physiological behaviors under the culture conditions with and without control [31, 32]. Therefore, the short-term adaptation of yeast to phenolic acids will be performed in

the fermentor for the further study to provide a more accurate prediction about the behavior of their strain when this strategy is used in the real industrial production of bioethanol.

Morphology analysis of adapted strain

The cell morphology and internal structure of the adapted and parental under the mixed phenolic acids' stress were observed using the scanning electron microscopy (SEM) and transmission electron microscopy (TEM) to analyze the phenolic acids' tolerance. The SEM images showed that most cells of the parental and adapted strains were of smooth ellipsoidal shape (Fig. 6). Certain cells of the parental strain and the control group of adaptive process showed obvious invaginations and folds on the surface (marked by arrows and circles), which were more than those of the adapted strains from methods E, I and K (Fig. 6f).

The TEM images showed apparent changes in the internal cellular structure (Fig. 7). The cells of the parental and control group strains showed many cytoplasmic membrane invaginations and the small fragments of vacuole in lobular shape, while the cells of adapted strains (from Method E, I and K) presented the normal cell morphology with little invaginations (Additional file 1: Figure S2). It was worth noting that the obvious disruption or crack was found at the top of cytoplasmic membrane invaginations (marked by the arrows) and the mitochondria (white circle dash line) surround this area (Fig. 7a). In addition, the cells from adaptive methods E and I showed the thicker cell wall and membrane (Fig. 7c, d) and the little protrusions with regular shape on cytoplasmic membrane (Fig. 7a), while the mean diameter of cells was slightly smaller than that of the other strains (Fig. 7b).

The results indicate that the inhibitory effect of phenolic acids on *S. cerevisiae* probably was caused by their aromatic group and carboxylic acid. The hydrophobic group might insert the phospholipid molecular layer, leading to loss of membrane integrity [8, 33, 34]. Carboxylic acid group of phenolic acid entered the cytoplasmic membrane and dissociated to form hydrogen ion (H⁺), which caused the intracellular pH disorder [35]. The mitochondria-surrounded cytoplasmic membrane invaginations indicated that cells needed more energy to keep the constant intracellular pH by ATPase pumping out excess protons [36, 37]. In addition, combined with the results that the adapted strains grew faster than the parental strain in the initial 12 h of SSF (Fig. 5b), the adapted strains might trigger stress response faster than the parental strain. The changes in the structure of cell wall and membrane possibly provide a strong cell barrier to resist the phenolic acids [38–40]. Yeast strain could

decrease cell volume and increase cell wall thickness by structural realignment of cell wall polysaccharide [41] and improve membrane integrity by cytoplasmic membrane proliferation [42]. Therefore, the short-term adaptation possibly accelerates the stress response of yeast cell structure for improving the tolerance to the phenolic acids.

Cytoplasmic membrane integrity

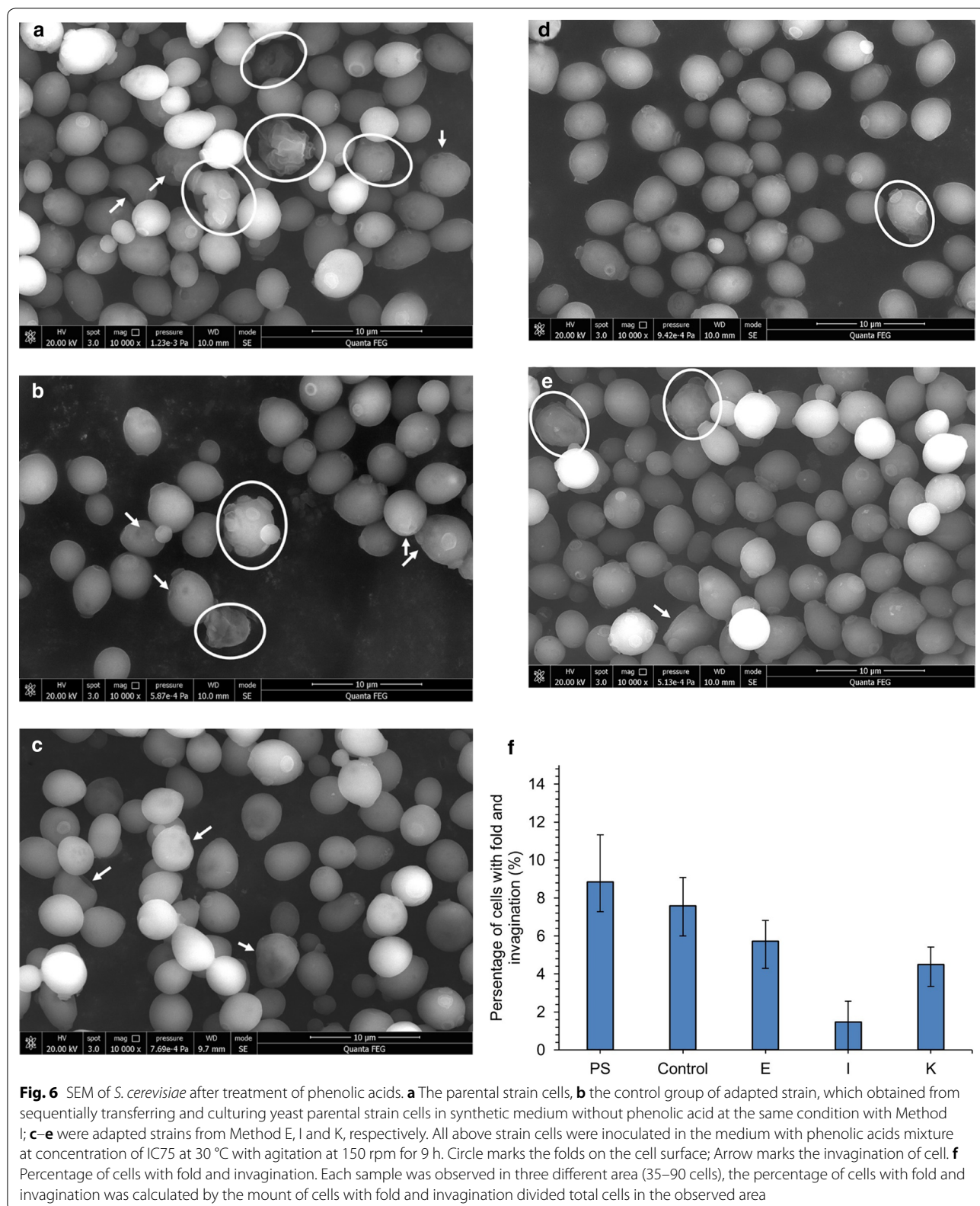
The cytoplasmic membrane permeability and integrity were evaluated by testing the relative electrical conductivity, leakage of intracellular substance and cells stained by propidium iodide (PI) fluorescent dye.

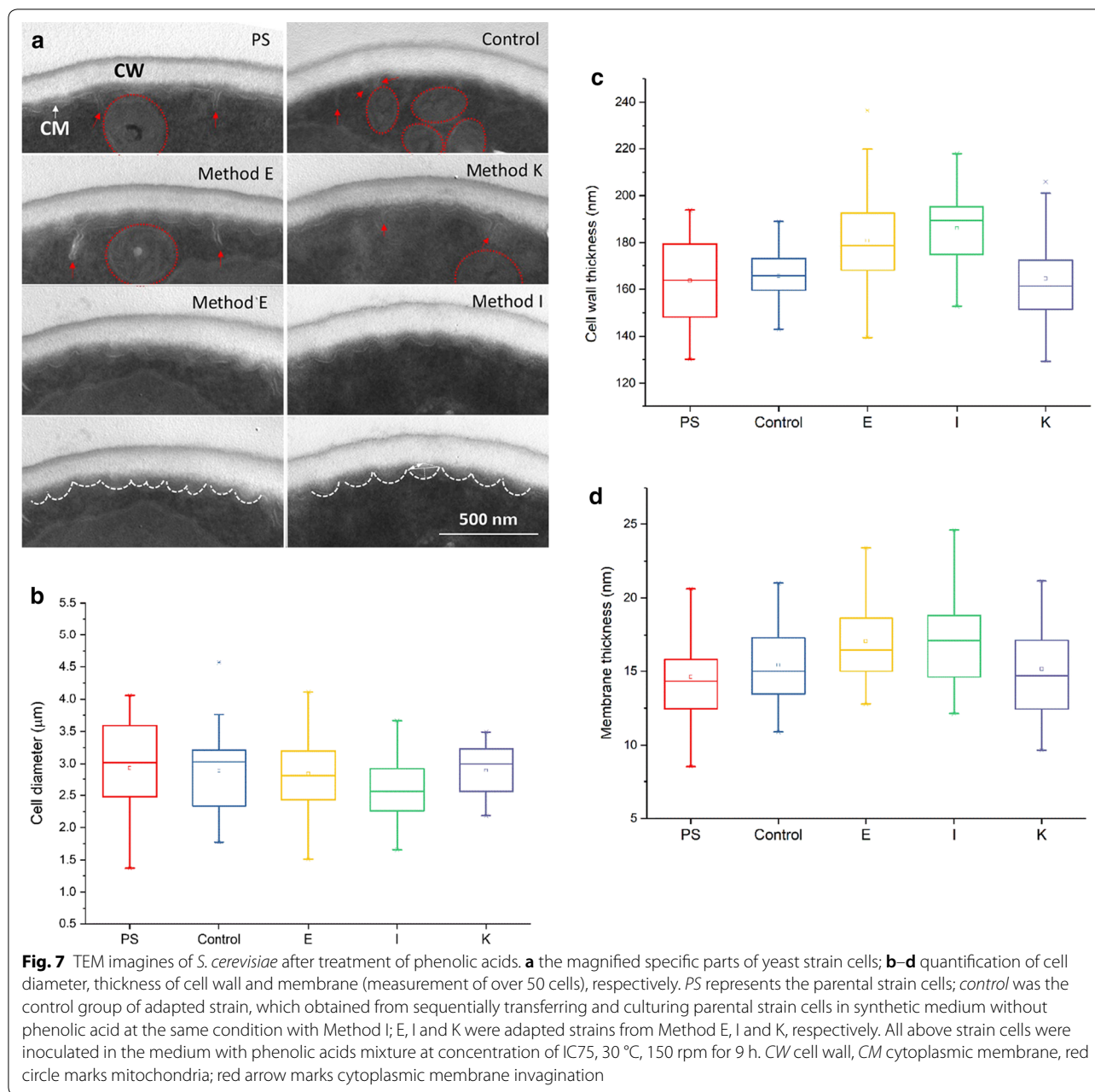
The electrical conductivities of all strains increased rapidly during the initial 3 h, and then the increase tended to slow down. The relative electrical conductivities of the adapted strains from methods E, I, K were approximately 40% until 12 h, which were lower than that of the parental strain (59.6%) and control group strain (55.3%) (Fig. 8a). In addition, the OD₂₆₀ (optical density at 260 nm) of the intracellular substances leaked from the adapted strains were approximately 0.72–1.34, which were lower than those of the parental strain and control group strain (Fig. 8b). Moreover, PI is an indicator of cytoplasmic membrane integrity for it can penetrate the damaged cytoplasmic membrane and form a fluorescent complex by banding with DNA or RNA. Under the phenolic acids stress, the PI stained cells of the parental strain and control group increased obviously to 28.5% and 26%, while those of the adapted strains from methods E, I and K were 10.3%, 15.4% and 16.2%, respectively (Fig. 8c).

The result suggests that the phenolic acids could affect the cytoplasmic membrane integrity of the yeast strains and cause cytoplasmic membrane to lose the selective permeability barrier function, which is agreeable with the previous study about effect of ferulic acid on *S. cerevisiae* and *Z. mobilis* [8]. Moreover, the adapted strains presented the greater membrane integrity than the parental strains under the phenolic acids stress. Similar result was reported in the adapted *S. cerevisiae* with high tolerance to a mixture of acetic acid, furfural and phenol [43]. Therefore, the improvement of cytoplasmic membrane integrity may contribute to the tolerance of the adapted strain to the phenolic acids.

Conclusion

Phenolic acids presented a significantly synergistic inhibition on the cell growth and ethanol fermentation performance. The toxic mechanism of the phenolic acid to *S. cerevisiae* might be the combined effect of the cytoplasmic membrane damage caused by its hydrophobic aromatic ring and the intracellular acidification induced by dissociation of its carboxylic acid group. In addition,



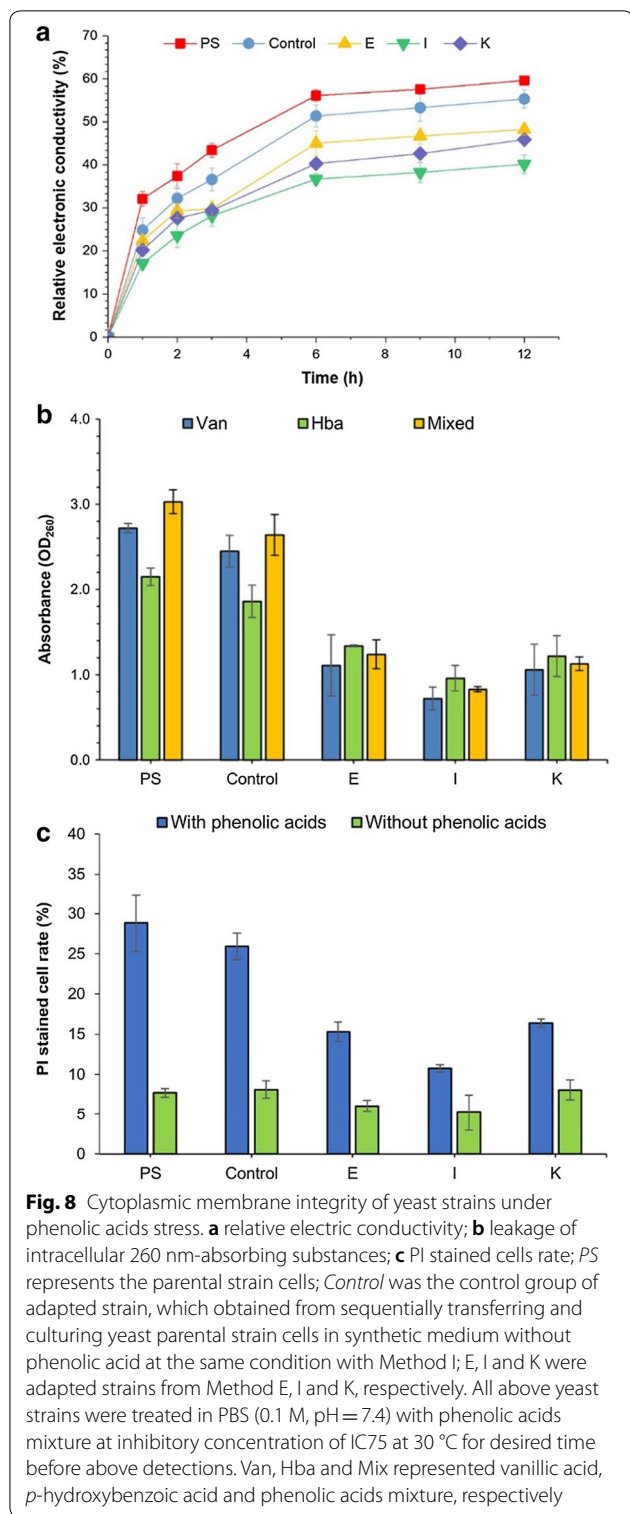


the phenolic acids level and the adaptive process of the short-term adaptation method played an important role in accelerating the stress response in yeast cell structure. The changes in cell morphology could maintain the cytoplasmic membrane integrity for improving the tolerance to the phenolic acids. The short-term adaptation strategies efficiently improve the ethanol productivity and cell growth viability during the SSF of corncob residue with rich phenolic acids.

Methods

Strain and chemicals

Saccharomyces cerevisiae used in this study was a commercial active dry yeast (product No. 80000012, Angel Yeast Co., Ltd., Yichang, China) with fast growth and fermentation rate [43, 44]. The strain was cultured in synthetic medium including 20.0 g/L of glucose, 2.0 g/L of KH_2PO_4 , 1.0 g/L of $(\text{NH}_4)_2\text{SO}_4$, 1.0 g/L of $\text{MgSO}_4 \cdot 7\text{H}_2\text{O}$ and 10 g/L of yeast extract. The culture solution was aliquoted into 2.0 mL cryopreservation vials with 30% (w/w) glycerol and stored at $-80\text{ }^\circ\text{C}$ freezer.



Yeast extract was purchased from Oxoid (Hampshire, England). Vanillic acid, *p*-hydroxybenzoic acid, syringic acid, propidium iodide were analytical pure and purchased from Sigma-Aldrich Trading Co. (Shanghai,

China). All other chemicals were analytically pure and obtained from Tianjin Kemiou Chemical Reagent Co. Ltd (Tianjin, China).

Analysis of inhibition of phenolic acids on *S. cerevisiae*

The inhibition of phenolic acids on the growth and fermentation of *S. cerevisiae* was investigated by culturing the strain in the inhibitor media containing phenolic acids. The stock solution of single or multiple phenolic acids including vanillic acid, *p*-hydroxybenzoic acid and syringic acid was added into the sterilized synthetic medium at desired concentration for inhibition studies. Dimethyl sulfoxide was used as cosolvent in the inhibitor medium with concentration below 0.7% (v/v) and without toxic effect on *S. cerevisiae* at this concentration [7, 14]. The strain was incubated in 100 mL flask that contained 20 mL of inhibitor media at desired concentration (Table 1) with 10% (v/v) of inoculation at 30 °C, 150 rpm for 24 h. For the study on synergistic inhibition of phenolic acids, a three-factor, two-level factorial design was preformed using the growth inhibition rate as response factor with concentrations of vanillic acid, *p*-hydroxybenzoic acid and syringic acid at 0 and 2.1 g/L, 0 and 3.5 g/L, 0 and 1.2 g/L, respectively. Samples were taken from shake flasks at desired time and centrifugated at 4427×*g* for 5 min. Optical density of strain cell was analyzed by spectrophotometry at 600 nm. A linear relationship between optical density and dry cell weight was 0.51 g/L dry cell weight corresponding to the OD₆₀₀ of 1.0. The supernatant was stored at -20 °C for the fermentation metabolites' analysis by HPLC. The synergistic inhibition on growth inhibition rate was statistically analyzed by Design-Expert version 8.0.6 from Stat-Ease, Inc. (Minneapolis, MN).

Determination of the growth and fermentation performance

The effect of phenolic acids on cell growth of *S. cerevisiae* was evaluated by specific growth rate (μ_{max}), growth inhibition rate (GI) and biomass yield ($Y_{x/s}$).

The specific growth rate was calculated by the following formula:

$$\mu_{max} = \frac{\ln(x_t/x_c)}{t}, \tag{1}$$

where μ_{max} is the maximum specific growth rate during the log phase (h^{-1}), x_t is the dry cell weight at the time t (g/L), x_c is the initial dry cell weight concentration (g/L), and t is the time interval between x_c and x_t (h) [45].

The growth inhibition rate was calculated by the following formula:

$$GI = \left(1 - \frac{\mu_i}{\mu_{sm}}\right) \times 100\%, \tag{2}$$

where GI is the growth inhibition rate of strain cultured in the inhibitor media of phenolic acids, μ_i and μ_{sm} are the maximum specific growth rate of strain cultured in the inhibitor media of phenolic acids and synthetic medium, respectively (h^{-1}). Especially, minimum inhibitory concentrations (MIC) were defined as the lowest concentration of phenolic acids which could cause complete inhibition on yeast cell growth within a 24 h' cultivation [46].

The $Y_{x/s}$ was obtained as the weight of maximum biomass divided by the total consumed glucose.

The effect of phenolic acids on fermentation performance of *S. cerevisiae* was evaluated by specific glucose uptake rate (q_{glucose}), specific ethanol productivity (q_{EtOH}) and ethanol yield (Y_{EtOH}). The q_{glucose} and q_{EtOH} were the ratio of the maximum glucose uptake rate (Q_{glucose}) and ethanol productivity (Q_{EtOH}) to the maximum dry cell weight, respectively. The Y_{EtOH} was the ratio of actual ethanol concentration to the theoretical ethanol from the total glucose in the medium.

Average values of biological replicates were used as the final yield for each culture condition.

Short-term adaptation to phenolic acids

The strain was cultured in a 100-mL flask containing 20 mL of sterilized synthetic medium at 10% (v/v) of inoculation, 30 °C, pH 6.0, for 18 h as the seeds culture.

The various short-term adaptive processes of *S. cerevisiae* to the phenolic acids mixture were performed according to the previous study [7]. Briefly, the adaptive process was carried out by sequentially transferring and culturing yeast cells in synthetic medium containing phenolic acids mixture at the inhibitory concentrations from IC25 to IC75 (Table 2). During the adaptive processes each batch of culture was incubated at 10% (v/v) of inoculation in 100 mL flask contained 20 mL of phenolic acid media at desired inhibitory concentration with pH range of 4.8–5.2, 30 °C with agitation at 150 rpm for 12 h. The adaptive processes were named from A to K according to the increase in culture batches and inhibitory concentrations during the adaptation. The growth and fermentation performance of the adapted strains were investigated and compared by incubated in the synthetic medium contained phenolic acids at concentration of IC75 (Fig. 3).

For testing genetic stability of the improved tolerance to phenolic acids, the yeast cells of adapted strain were transferred and cultured in the synthetic medium without phenolic acids for five batches (each batch of 12 h), and then were collected and added into the medium with mixed phenolic acids with the commercially available strain as control. Culture conditions were same as above mentioned.

Table 2 Concentrations of combined phenolic acids in synthetic media

	Concentrations of phenolic acids in adaptation media (g/L)		
	Vanillic acid	p-hydroxybenzoic acid	Syringic acid
IC25 ^a	1.16	0.70	0.58
IC50	1.40	0.84	0.70
IC75	1.60	0.97	0.80
IC100	1.90	1.14	0.95

^a IC25, IC50, IC75 and IC100 represented the synthetic media contained phenolic acids at inhibitory concentrations which could cause 25%, 50%, 75% and 100% inhibition on growth rate of the parental strain. The concentration of vanillic acid, p-hydroxybenzoic acid and syringic acid in the original mixture of phenolic acids was 2.5, 1.5 and 1.25 g/L and gradually diluted to different concentration level with the constant ratio shown as Table 1. A fitting curve of growth inhibition rate (GI) and dilution times was established based on the data of Table 1. The concentration of phenolic acids mixture led to 25%, 50% or 75% of growth inhibition was obtained by putting the growth inhibition rate of 25%, 50% and 75% into the equation of the fitting curve, respectively, and calculated the corresponding dilution times

Simultaneous saccharification and ethanol fermentation (SSF)

The SSF of corncob residue was performed in a 5-L bioreactor equipped with a helical impeller according to the previous study described by Zhang et al. [47]. The corncob residue contained 66.3% of water and 33.7% of total solids (the amount of solids remaining after heating the sample at 105 °C to constant weight [48]). The total solids of corncob residue contained 56.5% of glucan and 2.6% of xylan. Prehydrolysis of corncob residue was carried out with solids loading of 25% (g/g, weight of total solids of corncob residue/total weight of the SSF system. for example, 741.8 g corncob residue contained 250 g of total solids in the total 1000 g of the SSF system), cellulase dosage of 15 FPU/g total solids of corncob residue at 50 °C and pH 4.8 for 12 h. Then, SSF was performed at pH 5.5, 37 °C for 60 h by added the yeast strains into bioreactor with the initial OD_{600} of 7.5–8.1 and 10% of inoculation. About 1.5 mL of fermentation slurry (mixture of solid and liquid) was taken from the sampling port of bioreactor by a small wine dipper ladle spoon with long handle under the flam condition at desired time for the analysis of HPLC and cell growth. All the data are the mean values with standard deviations of the duplicate experiments.

The cell growth in the SSF process was measured by counting colony-forming units (CFU) [8]. 100 μL of diluted fermentation slurry (10^5) was spread on the solid synthetic medium and incubated at 30 °C for 48 h, and then the single colony on each dish was counted. An average value of triplicate samples represented for the cell growth performance.

HPLC analysis

Glucose, ethanol, acetic acid and glycerol were analyzed using LC-20AD HPLC (Shimadzu, Kyoto, Japan) equipped with RID-20A refractive index detector and Bio-Rad Aminex HPX-87H column at 65 °C. The mobile phase was 5 mM H₂SO₄ at 0.6 mL/min [45]. All samples were centrifuged at 11,167×g for 5 min and the supernatant filtered through a 0.22-μm filter before analysis.

Electron microscopy observation

The cell morphology of *S. cerevisiae* was examined using the scanning electron microscopy (SEM) and the transmission electron microscopy (TEM). The yeast cells were collected after the incubation in the inhibitor medium of IC75 at 30 °C, 150 rpm for 9 h. The process of sample preparation was carried out according to the previous study [8]. Briefly, the yeast cells were fixed with 2% glutaraldehyde for 30 min and dehydrated by a graded ethanol series, air-dried, and sputtered coat with 1–2 nm gold. The treated cells were observed on a FEI Quanta 450FEG SEM (FEI, Hillsboro, USA) at the accelerating voltage of 20 kV.

The sample preparation for TEM analysis was similar to that for SEM analysis with some exception as follows: the yeast cells were post-fixed with 2% osmium tetroxide (OsO₄) for 1 h, then dehydrated, embedded, sectioned, and mounted on the copper grids, after that stored in a desiccator before microscopic examination. Subsequently, the ultrathin sections were imaged by a JEM 1200EX TEM (JEOL, Tokyo, Japan) at the accelerating voltage of 80 kV. The mean thicknesses of cell wall and cytoplasmic membrane (measured 20 cells, 30 different location of each cell) and cell diameter (measured more than 40 cells) were measured using Image-J.

Cytoplasmic membrane integrity

The yeast cytoplasmic membrane permeability and integrity were evaluated according to the methods of analyzing the relative electrical conductivity, leakage of intracellular nucleotides and the propidium iodide (PI) stained cells described by with modification. The yeast strains were treated in PBS (0.1 M, pH = 7.4) with phenolic acids' mixture at inhibitory concentration of IC75 at 30 °C for desired time before above detections. The PBS (pH 7.4, 0.1 M) was selected to remove the effect of pH, osmotic pressure and other salt ions in the medium on the cytoplasmic membrane [49–51].

The relative electrical conductivity was analyzed as following: yeast cells (approximately 1 × 10⁷ cells/mL) were treated with the mixed phenolic acids for 12 h. The samples were taken at the desired time and centrifuged at 4427×g for 5 min. The electrical conductivity of

supernatant was measured using a DDS-307 conductometer (INESA Scientific Instrument Co., Ltd., Shanghai, China). The relative electrical conductivity was calculated according to the following equation:

$$\text{Relative electrical conductivity} = \frac{K_1 - K_0}{K_2 - K_0'} \times 100\% \quad (3)$$

where the electrical conductivity of sample supernatant was recorded as K_1 , and that of PBS with the mixed phenolic acids was recorded as K_0 . The electrical conductivity of the yeast cells incubated in the PBS and boiled for 5 min after taken at the desired time was recorded as K_2 , and that of PBS was recorded as K_0' .

The leakage of intracellular nucleotides was analyzed as following: yeast cells (approximately 1 × 10⁷ cells/mL) were treated the phenolic acids mixture for 3 h. The release of nucleotides was measured at 260 nm by a 752-N spectrophotometer (INESA Analytical Instrument Co., Ltd, Shanghai, China), and the PBS contained phenolic acids mixture was used as a blank.

Flow cytometry analysis: after being treated with the phenolic acids mixture for 9 h, yeast cells (approximately 10⁷ cells/mL) were stained with PI (1 μg/mL) and incubated in the dark at 4 °C for 15 min. The stained cells were washed three times and measured using BD FACSCalibur™ flow cytometer with Cell-Quest Pro software (BD Biosciences, Franklin Lakes, NJ, USA). 20,000 cells were collected at the flow rate of fluidics at 35 μL/s. The excitation was at 488 nm, and PI emission was collected at 585/40 nm.

Supplementary information

Supplementary information accompanies this paper at <https://doi.org/10.1186/s13068-019-1610-9>.

Additional file 1: Figure S1. Effect of phenolic acids on the specific growth rate. **Figure S2.** TEM imagines of *S. cerevisiae* after treatment of phenolic acids.

Abbreviations

CFU: colony-forming units; GI: growth inhibition rate; HPLC: high-performance liquid chromatography; H: *p*-hydroxybenzoic acid; H + S: *p*-hydroxybenzoic acid and syringic acid; IC: inhibition concentration; K: electrical conductivity; MIC: minimum inhibitory concentrations; OD: optical density; PI: propidium iodide; Q_{glucose} : glucose uptake rate; Q_{EtOH} : ethanol productivity; q_{glucose} : specific glucose uptake rate; S: syringic acid; SSF: simultaneous saccharification and ethanol fermentation; q_{EtOH} : specific ethanol productivity; SEM: scanning electron microscopy; TEM: transmission electron microscopy; μ_{max} : specific growth rate; V: vanillic acid; V + H: vanillic acid and *p*-hydroxybenzoic acid; V + S: vanillic acid and syringic acid; VHS: vanillic acid, *p*-hydroxybenzoic acid and syringic acid; $Y_{X/S}$: biomass yield; Y_{EtOH} : ethanol yield.

Acknowledgements

We would like to thank Prof. Jie Bao and Jingli Xie (State Key Laboratory of Bioreactor Engineering, East China University of Science and Technology) for kindly providing us with corncob residue and their helps to this study. We also want to thank Prof. Xuejun Pan (Department of Biological Systems

Engineering, University of Wisconsin-Madison) for polishing the language of this manuscript.

Authors' contributions

HQG and JL conceived and designed the study and revised the final manuscript. HQG and YYZ carried out most of the experiments, analysis and calculation of dates, and drafted the manuscript. YFP and XGL carried out experiment to investigate synergistic inhibition of phenolic acids. RL and LZS carried out simultaneous saccharification and ethanol fermentation in bioreactor; XJL, YYX and ZHX performed morphology characterization and membrane integrity analysis of the adapted and parental strains under phenolic acids. All authors read and approved the final manuscript.

Funding

This research was supported by the fund from the National Natural Science Foundation of China (No. NSFC 21606071), the Science and Technology Research Project of Hebei Province Higher Education Institution (No. BJ2017104), the Open Funding Project of the State Key Laboratory of Bioreactor Engineering, the Open Foundation of Key Laboratory for Solid Waste Management and Environment Safety (Tsinghua University), Ministry of Education China (No. SWMES 2015-09) and the Chinese Scholarship Council (CSC 201808130055).

Availability of data and materials

The datasets used and/or analyzed during the current study are available from the corresponding author on reasonable request.

Ethics approval and consent to participate

Not applicable.

Consent for publication

Not applicable.

Competing interests

The authors declare that they have no competing interests.

Author details

¹ Department of Biology and Food Science, Hebei Normal University for Nationalities, Chengde 067000, Hebei, China. ² State Key Laboratory of Bioreactor Engineering, East China University of Science and Technology, 130 Meilong Road, Shanghai 200237, China. ³ Basic Medical Institute, Chengde Medical University, Chengde 067000, Hebei, China.

Received: 31 July 2019 Accepted: 4 November 2019

Published online: 14 November 2019

References

- Yang S, Franden MA, Yang Q, Chou Y-C, Zhang M, Pienkos PT. Identification of inhibitors in lignocellulosic slurries and determination of their effect on hydrocarbon-producing microorganisms. *Front Bioeng Biotechnol*. 2018;6:23.
- Klinke HB, Ahring BK, Schmidt AS, Thomsen AB. Characterization of degradation products from alkaline wet oxidation of wheat straw. *Bioresour Technol*. 2002;82:15–26.
- Cao GL, Ren NQ, Wang AJ, Guo WQ, Xu JF, Liu BF. Effect of lignocellulose-derived inhibitors on growth and hydrogen production by *Thermoanaerobacterium thermosaccharolyticum* W16. *Int J Hydrogen Energ*. 2010;35:13475–80.
- Zhang L, Li X, Yong Q, Yang ST, Ouyang J, Yu S. Impacts of lignocellulose-derived inhibitors on L-lactic acid fermentation by *Rhizopus oryzae*. *Bioresour Technol*. 2016;203:173–80.
- Liu ZL. Molecular mechanisms of yeast tolerance and in situ detoxification of lignocellulose hydrolysates. *Appl Microbiol Biotechnol*. 2011;90:809–25.
- Klinke HB, Thomsen AB, Ahring BK. Inhibition of ethanol-producing yeast and bacteria by degradation products produced during pre-treatment of biomass. *Appl Microbiol Biotechnol*. 2004;66:10–26.
- Gu H, Zhang J, Bao J. Inhibitor analysis and adaptive evolution of *Saccharomyces cerevisiae* for simultaneous saccharification and ethanol fermentation from industrial waste corncob residues. *Bioresour Technol*. 2014;157:6–13.
- Gu H, Zhang J, Bao J. High tolerance and physiological mechanism of *Zymomonas mobilis* to phenolic inhibitors in ethanol fermentation of corncob residue. *Biotechnol Bioeng*. 2015;112:1770–82.
- Adeboye PT, Bettiga M, Olsson L. The chemical nature of phenolic compounds determines their toxicity and induces distinct physiological responses in *Saccharomyces cerevisiae* in lignocellulose hydrolysates. *AMB Express*. 2014;4:46.
- Heipieper HJ, Weber FJ, Sikkema J, Keweloh H, de Bont JAM. Mechanisms of resistance of whole cells to toxic organic solvents. *Trends Biotechnol*. 1994;12:409–15.
- Terada H. Uncouplers of oxidative phosphorylation. *Environ Health Perspect*. 1990;87:213–8.
- Almeida JRM, Modig T, Petersson A, Hahn-Hägerdal B, Lidén G, Gorwa-Grauslund MF. Increased tolerance and conversion of inhibitors in lignocellulosic hydrolysates by *Saccharomyces cerevisiae*. *J Chem Technol Biotechnol*. 2007;82:340–9.
- Zaldivar J, Ingram LO. Effect of organic acids on the growth and fermentation of ethanologenic *Escherichia coli* LY01. *Biotechnol Bioeng*. 1999;66:203–10.
- Franden MA, Pilath H, Mohagheghi A, Pienkos P, Zhang M. Inhibition of growth of *Zymomonas mobilis* by model compounds found in lignocellulosic hydrolysates. *Biotechnol Biofuels*. 2013;6:99.
- Zhu J, Yang J, Zhu Y, Zhang L, Yong Q, Xu Y, Li X, Yu S. Cause analysis of the effects of acid-catalyzed steam-exploded corn stover prehydrolyzate on ethanol fermentation by *Pichia stipitis* CBS 5776. *Bioproc Biosyst Eng*. 2014;37:2215–22.
- Campos FM, Couto JA, Figueiredo AR, Tóth IV, Rangel AOSS, Hogg TA. Cell membrane damage induced by phenolic acids on wine lactic acid bacteria. *Int J Food Microbiol*. 2009;135:144–51.
- Aulitto M, Fusco S, Nickel DB, Bartolucci S, Contursi P, Franzén CJ. Seed culture pre-adaptation of *Bacillus coagulans* MA-13 improves lactic acid production in simultaneous saccharification and fermentation. *Biotechnol Biofuels*. 2019;12:45.
- Narayanan V, Sánchez I, Nogué V, van Niel EWJ, Gorwa-Grauslund MF. Adaptation to low pH and lignocellulosic inhibitors resulting in ethanolic fermentation and growth of *Saccharomyces cerevisiae*. *AMB Express*. 2016;6:59.
- Nielsen F, Tomás-Pejó E, Olsson L, Wallberg O. Short-term adaptation during propagation improves the performance of xylose-fermenting *Saccharomyces cerevisiae* in simultaneous saccharification and co-fermentation. *Biotechnol Biofuels*. 2015;8:219.
- Cakar ZP, Alkim C, Turanlı B, Tokman N, Akman S, Sarikaya M, Tamerler C, Benbadis L, François JM. Isolation of cobalt hyper-resistant mutants of *Saccharomyces cerevisiae* by in vivo evolutionary engineering approach. *J Biotechnol*. 2009;143:130–8.
- Mettetal JT, Muzzey D, Gómez-Urbe C, van Oudenaarden A. The frequency dependence of osmo-adaptation in *Saccharomyces cerevisiae*. *Science*. 2008;319:482–4.
- van der Pol E, Springer J, Vriesendorp B, Weusthuis R, Eggink G. Precultivation of *Bacillus coagulans* DSM2314 in the presence of furfural decreases inhibitory effects of lignocellulosic by-products during l(+)-lactic acid fermentation. *Appl Microbiol Biotechnol*. 2016;100:10307–19.
- Jönsson LJ, Martin C. Pretreatment of lignocellulose: formation of inhibitory by-products and strategies for minimizing their effects. *Bioresour Technol*. 2016;199:103–12.
- Klinke HB, Olsson L, Thomsen AB, Ahring BK. Potential inhibitors from wet oxidation of wheat straw and their effect on ethanol production of *Saccharomyces cerevisiae*: wet oxidation and fermentation by yeast. *Biotechnol Bioeng*. 2003;81:738–47.
- van der Pol EC, Vaessen E, Weusthuis RA, Eggink G. Identifying inhibitory effects of lignocellulosic by-products on growth of lactic acid producing micro-organisms using a rapid small-scale screening method. *Bioresour Technol*. 2016;209:297–304.
- Stalikas CD. Extraction, separation, and detection methods for phenolic acids and flavonoids. *J Sep Sci*. 2007;30:3268–95.
- Świącilo A. Cross-stress resistance in *Saccharomyces cerevisiae* yeast—new insight into an old phenomenon. *Cell Stress Chaperon*. 2016;21:187–200.
- Morano KA, Grant CM, Moye-Rowley WS. The response to heat shock and oxidative stress in *Saccharomyces cerevisiae*. *Genetics*. 2012;190:1157–95.

29. Zacharioudakis I, Gligoris T, Tzamaris D. A yeast catabolic enzyme controls transcriptional memory. *Curr Biol*. 2007;17:2041–6.
30. Ben Meriem Z, Khalil Y, Hersen P, Fabre E. Hyperosmotic stress response memory is modulated by gene positioning in yeast. *Cells*. 2019;8:582.
31. Aulitto M, Fusco S, Bartolucci S, Franzén CJ, Contursi P. *Bacillus coagulans* MA-13: a promising thermophilic and cellulolytic strain for the production of lactic acid from lignocellulosic hydrolysate. *Biotechnol Biofuels*. 2017;10:210.
32. Raulo R, Heuson E, Siah A, Phalip V, Froidevaux R. Innovative microscale workflow from fungi cultures to cell wall-degrading enzyme screening. *Microb Biotechnol*. 2019;12:1286–92.
33. Hasunuma T, Kondo A. Development of yeast cell factories for consolidated bioprocessing of lignocellulose to bioethanol through cell surface engineering. *Biotechnol Adv*. 2012;30:1207–18.
34. Cunha JT, Romani A, Costa CE, Sá-Correia I, Domingues L. Molecular and physiological basis of *Saccharomyces cerevisiae* tolerance to adverse lignocellulose-based process conditions. *Appl Microbiol Biotechnol*. 2019;103:159–75.
35. Pampulha ME, Loureiro-Dias MC. Combined effect of acetic acid, pH and ethanol on intracellular pH of fermenting yeast. *Appl Microbiol Biotechnol*. 1989;31:547–50.
36. Holyoak CD, Stratford M, McMullin Z, Cole MB, Crimmins K, Brown AJ, Coote PJ. Activity of the plasma membrane H(+)-ATPase and optimal glycolytic flux are required for rapid adaptation and growth of *Saccharomyces cerevisiae* in the presence of the weak-acid preservative sorbic acid. *Appl Microbiol Biotechnol*. 1996;62:3158–64.
37. Jonsson LJ, Aliksson B, Nilvebrant NO. Bioconversion of lignocellulose: inhibitors and detoxification. *Biotechnol Biofuels*. 2013;6:16.
38. Gibson BR, Lawrence SJ, Leclair JPR, Powell CD, Smart KA. Yeast responses to stresses associated with industrial brewery handling. *FEMS Microbiol Rev*. 2007;31:535–69.
39. Cohen BE. Membrane thickness as a key factor contributing to the activation of osmosensors and essential Ras signaling pathways. *Front Cell Dev Biol*. 2018;6:76.
40. Simões T, Mira NP, Fernandes AR, Sá-Correia I. The SPI1 gene, encoding a glycosylphosphatidylinositol-anchored cell wall protein, plays a prominent role in the development of yeast resistance to lipophilic weak-acid food preservatives. *Appl Environ Microbiol*. 2006;72:7168–75.
41. Ene IV, Walker LA, Schiavone M, Lee KK, Martin-Yken H, Dague E, Gow NAR, Munro CA, Brown AJP. Cell wall remodeling enzymes modulate fungal cell wall elasticity and osmotic stress resistance. *mBio*. 2015;6:e00986-15.
42. Murata Y, Watanabe T, Sato M, Momose Y, Nakahara T, Oka S-I, Iwahashi H. Dimethyl sulfoxide exposure facilitates phospholipid biosynthesis and cellular membrane proliferation in yeast cells. *J Biol Chem*. 2003;278:33185–93.
43. Yang J, Ding MZ, Li BZ, Liu ZL, Wang X, Yuan YJ. Integrated phospholipidomics and transcriptomics analysis of *Saccharomyces cerevisiae* with enhanced tolerance to a mixture of acetic acid, furfural, and phenol. *OMICS*. 2012;16:374–86.
44. Zhu JQ, Li X, Qin L, Li WC, Li HZ, Li BZ, Yuan YJ. In situ detoxification of dry dilute acid pretreated corn stover by co-culture of xylose-utilizing and inhibitor-tolerant *Saccharomyces cerevisiae* increases ethanol production. *Bioresour Technol*. 2016;218:380–7.
45. Ask M, Mapelli V, Hock H, Olsson L, Bettiga M. Engineering glutathione biosynthesis of *Saccharomyces cerevisiae* increases robustness to inhibitors in pretreated lignocellulosic materials. *Microb Cell Fact*. 2013;12:87.
46. Sonderegger M, Jeppsson M, Larsson C, Gorwa-Grauslund M-F, Boles E, Olsson L, Spencer-Martins I, Hahn-Hägerdal B, Sauer U. Fermentation performance of engineered and evolved xylose-fermenting *Saccharomyces cerevisiae* strains. *Biotechnol Bioeng*. 2004;87:90–8.
47. Zhang J, Chu D, Huang J, Yu Z, Dai G, Bao J. Simultaneous saccharification and ethanol fermentation at high corn stover solids loading in a helical stirring bioreactor. *Biotechnol Bioeng*. 2010;105:718–28.
48. Sluiter A, Hames B, Hyman D, Payne C, Ruiz R, Scarlata C, Sluiter J, Templeton D, Wolfe J. Determination of total solids in biomass and total dissolved solids in liquid process samples. national renewable energy laboratory technical report 2008: NREL/TP-510-42621.
49. Narayanan V, Schelin J, Gorwa-Grauslund M, van Niel EWJ, Carlquist M. Increased lignocellulosic inhibitor tolerance of *Saccharomyces cerevisiae* cell populations in early stationary phase. *Biotechnol Biofuels*. 2017;10:114.
50. Lv F, Liang H, Yuan Q, Li C. In vitro antimicrobial effects and mechanism of action of selected plant essential oil combinations against four food-related microorganisms. *Food Res Int*. 2011;44:3057–64.
51. Zhang Y, Liu X, Wang Y, Jiang P, Quek S. Antibacterial activity and mechanism of cinnamon essential oil against *Escherichia coli* and *Staphylococcus aureus*. *Food Control*. 2016;59:282–9.

Publisher's Note

Springer Nature remains neutral with regard to jurisdictional claims in published maps and institutional affiliations.

Ready to submit your research? Choose BMC and benefit from:

- fast, convenient online submission
- thorough peer review by experienced researchers in your field
- rapid publication on acceptance
- support for research data, including large and complex data types
- gold Open Access which fosters wider collaboration and increased citations
- maximum visibility for your research: over 100M website views per year

At BMC, research is always in progress.

Learn more biomedcentral.com/submissions

